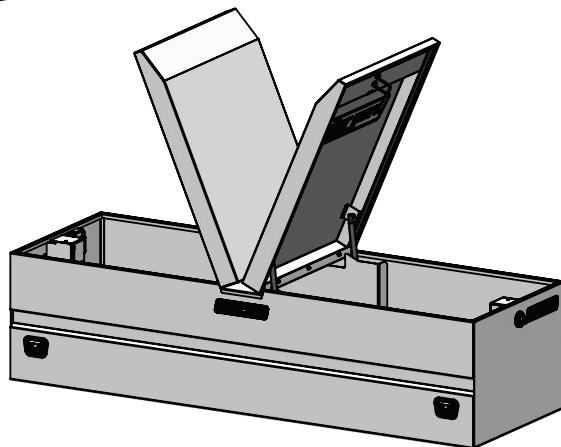
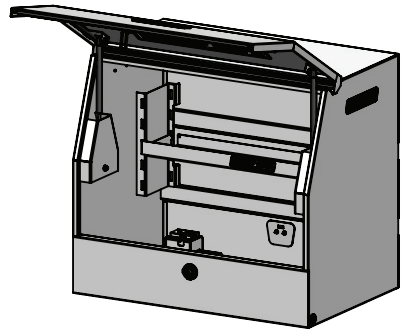
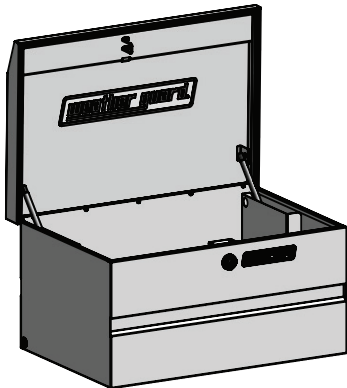




INSTRUCTION MANUAL FOR INSTALLING ALUMINIUM CHEST, UPRIGHT & GULLWING PRODUCTS

PLEASE READ AND UNDERSTAND ALL INSTRUCTIONS AND WARNINGS
BEFORE ASSEMBLING, INSTALLING OR USING THIS PRODUCT.



WARNINGS:

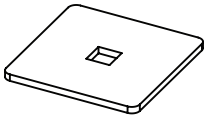
Use the specific mounting components when installing WEATHER GUARD® products.

Always use appropriate PPE (eyes, hearing, skin, clothing, footwear) when installing WEATHER GUARD® products.

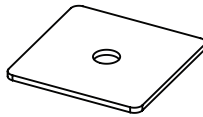
TOOLS REQUIRED

Tape Measure ♦ Marker ♦ Centre Punch ♦ Hammer
Drill ♦ 8.5mm Drill Bit ♦ 13mm Spanner

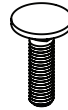
COMPONENT LIST



Washer (x8)



Gasket (x4)



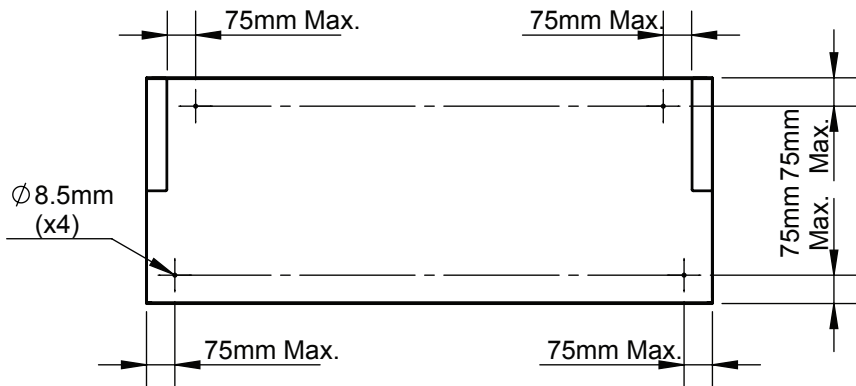
Bolt (x4)



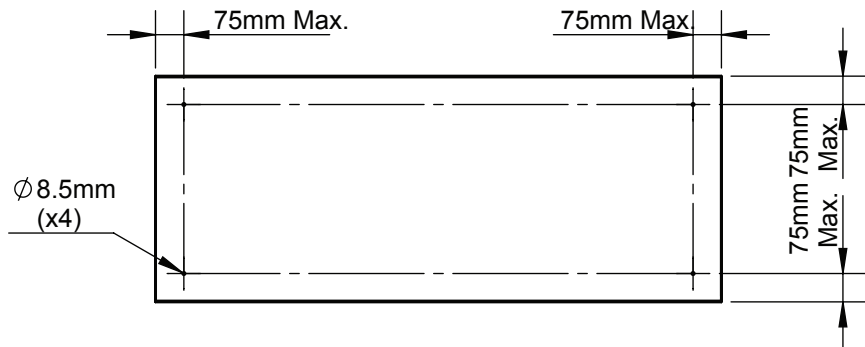
Nut (x4)

INSTALLATION INSTRUCTIONS

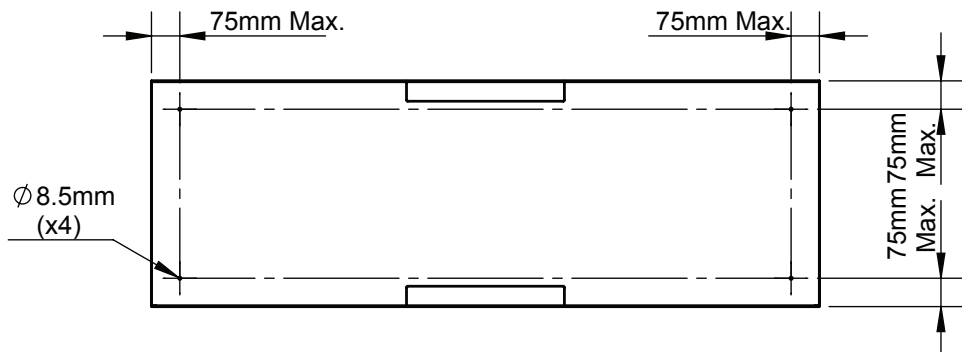
1. Ensure the vehicle is parked on level ground with the park brake engaged.
2. Prior to drilling, so as not to cut or puncture fuel tanks, fuel lines, electrical wires, etc., check under the vehicle for their locations.
3. Place the product on the vehicle body in the desired position.
4. Check for any interferences with the product cover open.
5. Measure a mark the four mounting hole positions (refer figures 1, 2 or 3).
6. Drill the four $\varnothing 8.5\text{mm}$ holes through the product base panel and the vehicle floor plate.
7. Insert the Bolt, Washer and Gasket through the four mounting holes inside the product (refer figure 4).
8. Fit the Washer and Nut on the underside of the vehicle floor plate.
9. Firmly tighten all the fasteners.
10. Ensure the product cover opens and closes properly.
11. Periodically check the tightness of all fasteners to ensure proper installation of the product.



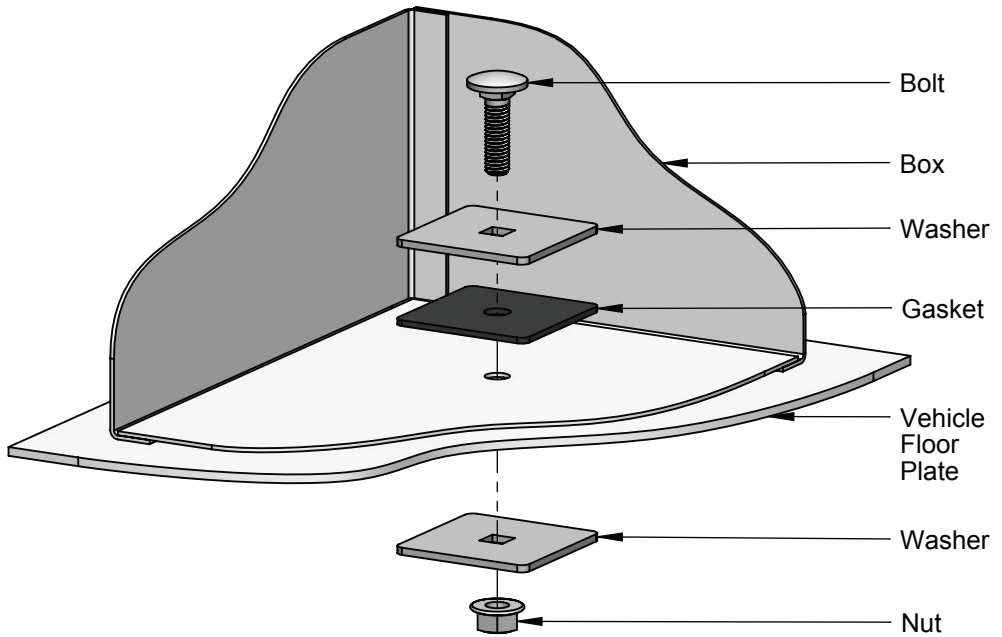
(Figure 1.) Typical Mounting Hole Positions for CHEST Products



(Figure 2.) Typical Mounting Hole Positions for UPRIGHT Products



(Figure 3.) Typical Mounting Hole Positions for GULLWING Products



(Figure 4.) Typical Assembly

12V Electrical Access

WEATHER GUARD® products are manufactured with a 12 Volt electrical access grommet for easy electrical fit-ups. To use, simply cut along one of more perforations in the grommet and pass the wire through. Do not insert cables through the hole without the grommet in place. Do not place or attempt to charge lead acid, vehicle type batteries inside this product.

